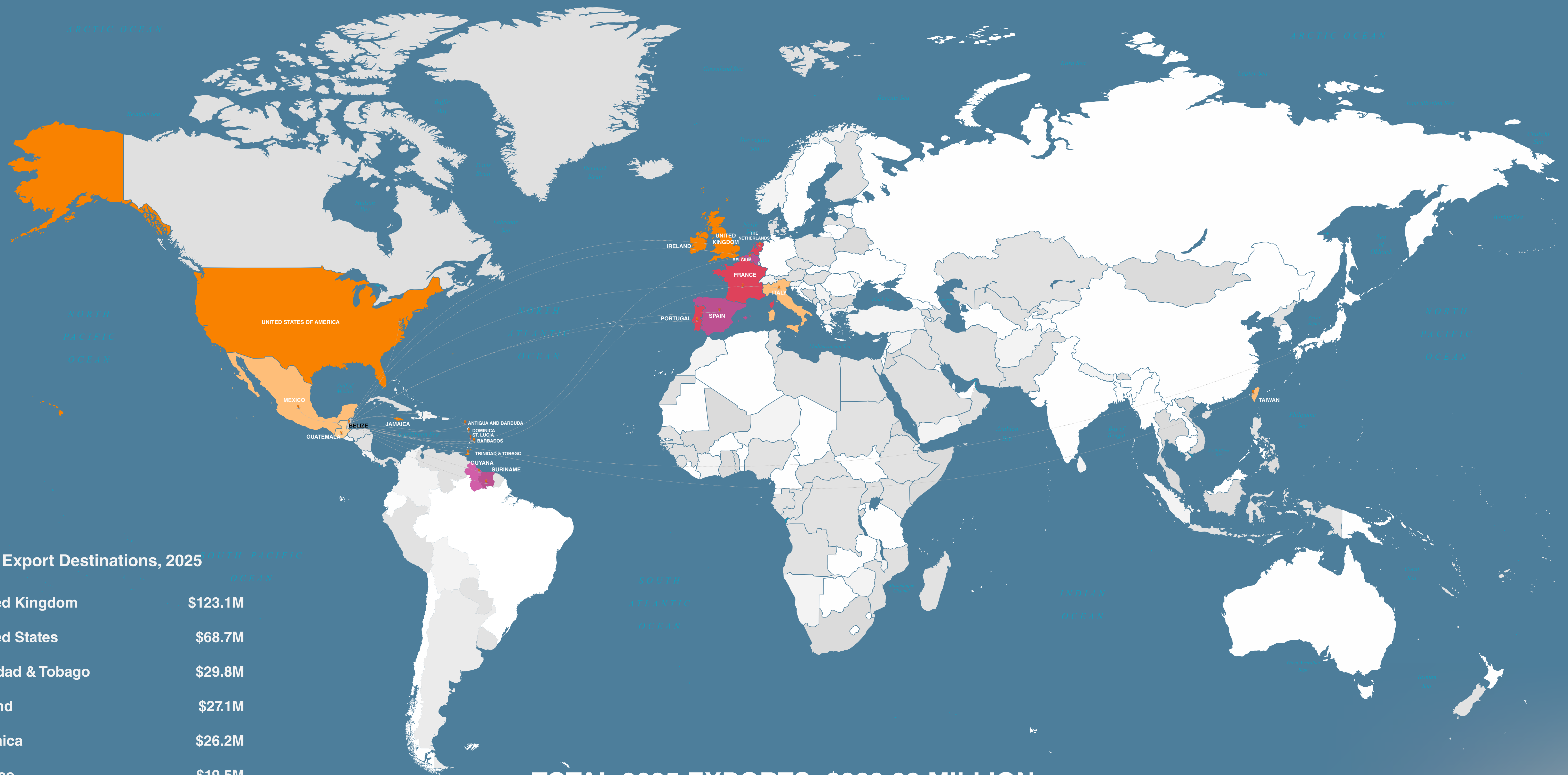


BELIZE DOMESTIC EXPORTS, 2025

TOP 20 COUNTRIES

1-5 6-10 11-15 16-20



Top Ten Export Destinations, 2025

	United Kingdom	\$123.1M
	United States	\$68.7M
	Trinidad & Tobago	\$29.8M
	Ireland	\$27.1M
	Jamaica	\$26.2M
	Mexico	\$19.5M
	Guatemala	\$17.5M
	Barbados	\$8.2M
	Taiwan	\$6.8M
	Italy	\$6.5M

TOTAL 2025 EXPORTS: \$389.89 MILLION

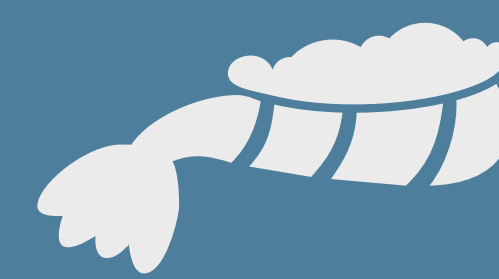
TOP FIVE MAJOR DOMESTIC EXPORTS



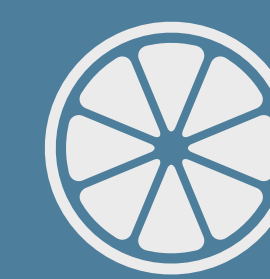
SUGAR
\$113.7M



BANANA
\$91M



MARINE EXPORTS
\$46.4M



ORANGE CONCENTRATE
\$27.8M



MOLASSES
\$10.0M