

# MULTIDIMENSIONAL POVERTY INDEX

## BELIZE 2025

### BELIZE MULTIDIMENSIONAL POVERTY INDEX

The multidimensional poverty index directly measures different kinds of deprivation that people experience simultaneously across various facets of their life. The multidimensional poverty index considers seventeen different variables across four dimensions.

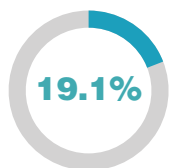


Each household is assessed for each of the 17 indicators and gets a score (deprivation score) depending on the indicators for which it is deprived. The household's total deprivation score is increased by the weight assigned to that indicator. After the household has been assessed for all 17 indicators, the deprivation score for that household will be a number between zero and one. All households with deprivation scores of 0.25 or higher are considered to be multidimensionally poor households.

### Official Multidimensional Poverty Estimates, September 2025

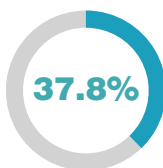
The official Multidimensional Poverty Index in September 2025 was 0.072, with 19.1 percent of the population being multidimensionally poor and an intensity rate of 37.8 percent. It was estimated that 76,779 persons spread across 17,753 households, were multidimensionally poor.

Incidence of Poverty



X

Intensity of Poverty

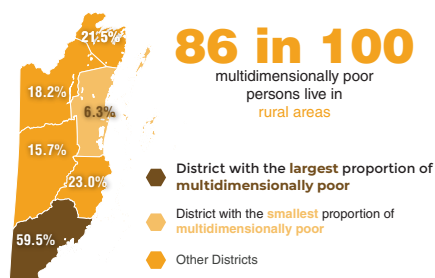


=

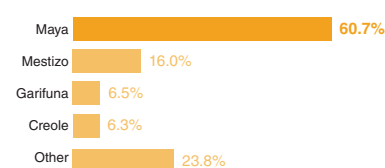
Multidimensional Poverty Index

0.072

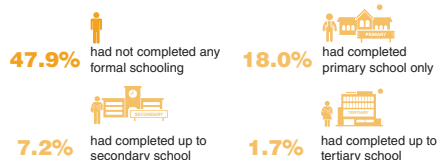
### Multidimensional poverty by district



### Multidimensional poverty by ethnicity



### Multidimensional poverty by educational attainment of household head



### Multidimensional poverty by household size

3 members or less

11.1%



4 to 6 members

17.9%



7 members or more

45.2%

