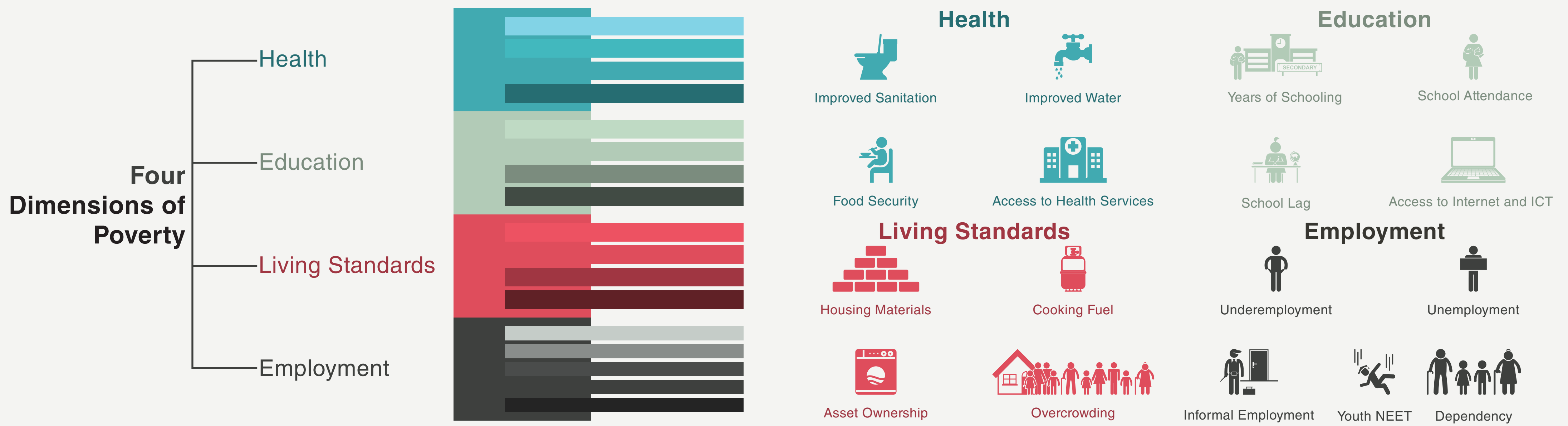


# MULTIDIMENSIONAL POVERTY INDEX

## BELIZE 2023

### BELIZE MULTIDIMENSIONAL POVERTY INDEX

The multidimensional poverty index directly measures different kinds of deprivation that people experience simultaneously across various facets of their life. The multidimensional poverty index considers seventeen different variables across four dimensions.

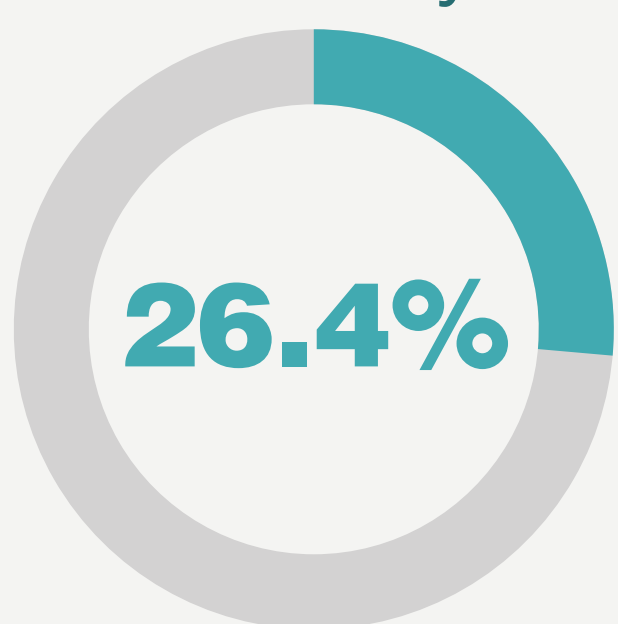


Each household is assessed for each of the 17 indicators and gets a score (deprivation score) depending on the indicators for which it is deprived. The household's total deprivation score is increased by the weight assigned to that indicator. After the household has been assessed for all 17 indicators, the deprivation score for that household will be a number between zero and one. All households with deprivation scores of 0.25 or higher are considered to be multidimensional poor households.

### Official Multidimensional Poverty Estimates, September 2023

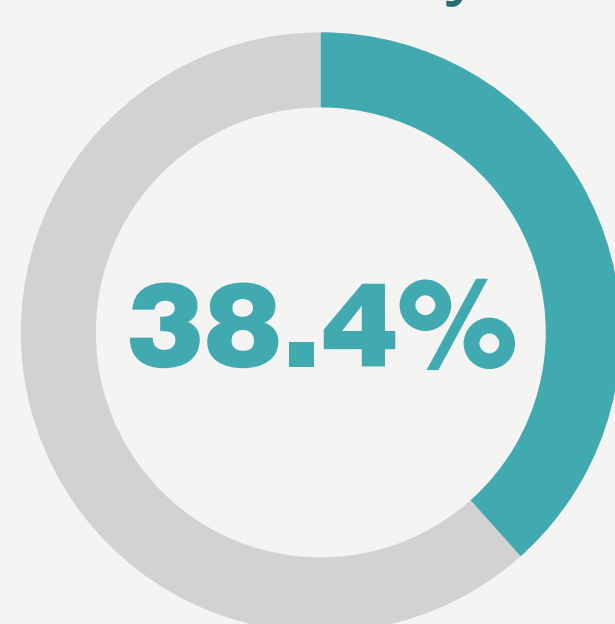
The official Multidimensional Poverty Index in September 2023 was 0.101, with 26.4 percent of the population being multidimensionally poor and an intensity rate of 38.4 percent. It was estimated that 103,944 persons spread across 24,096 households, were multidimensionally poor.

#### Incidence of Poverty



X

#### Intensity of Poverty

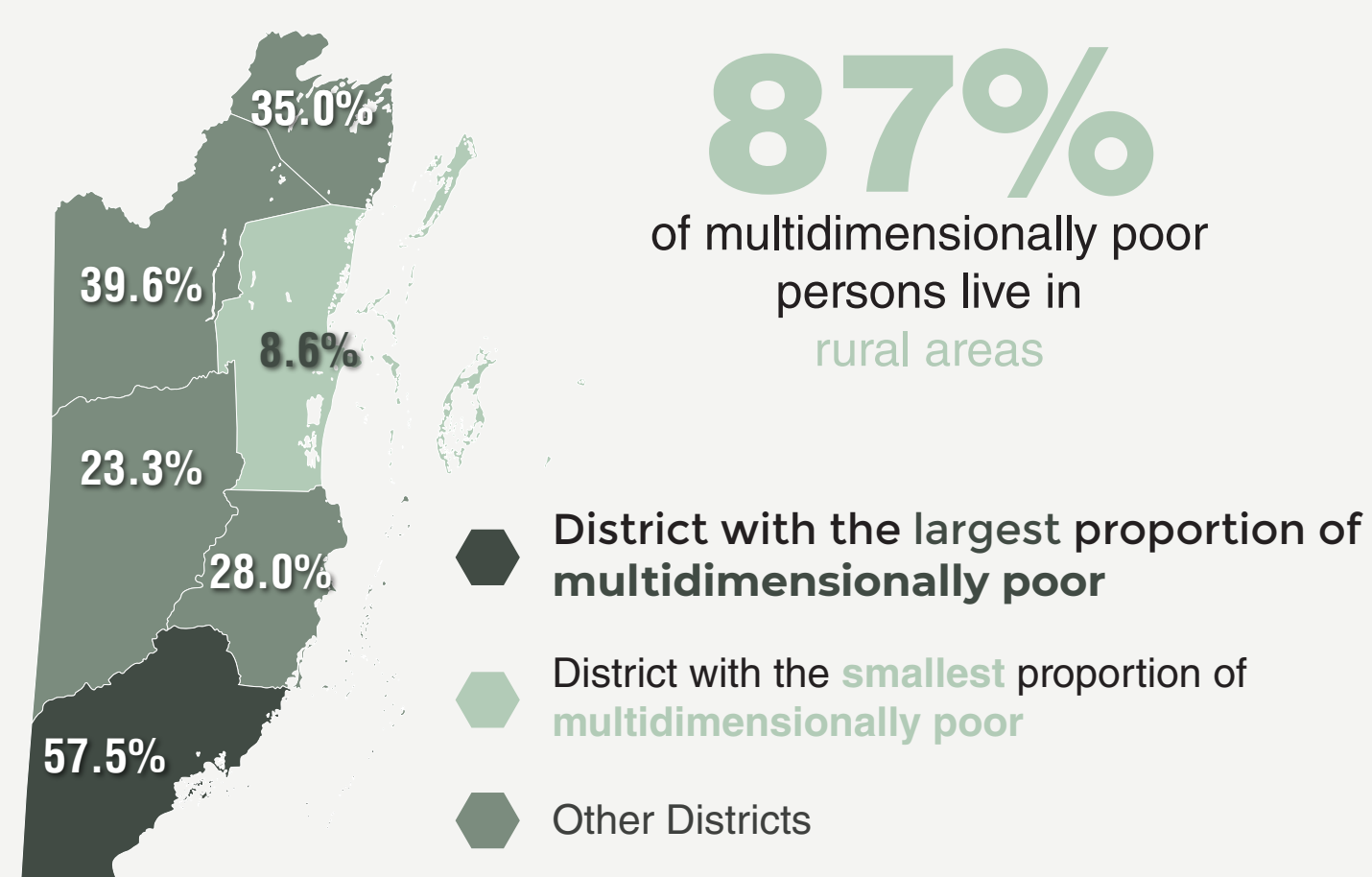


=

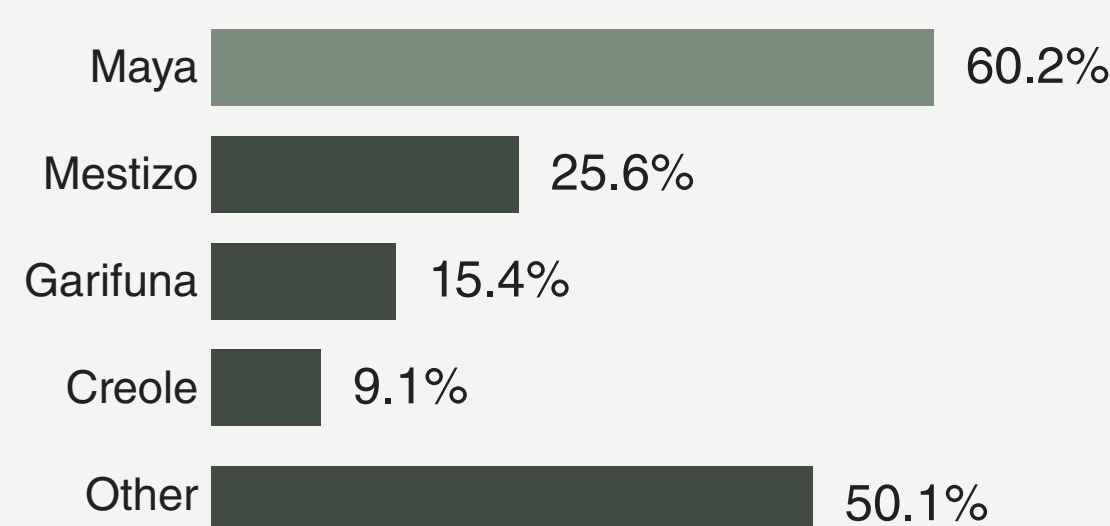
Multidimensional Poverty Index

# 0.101

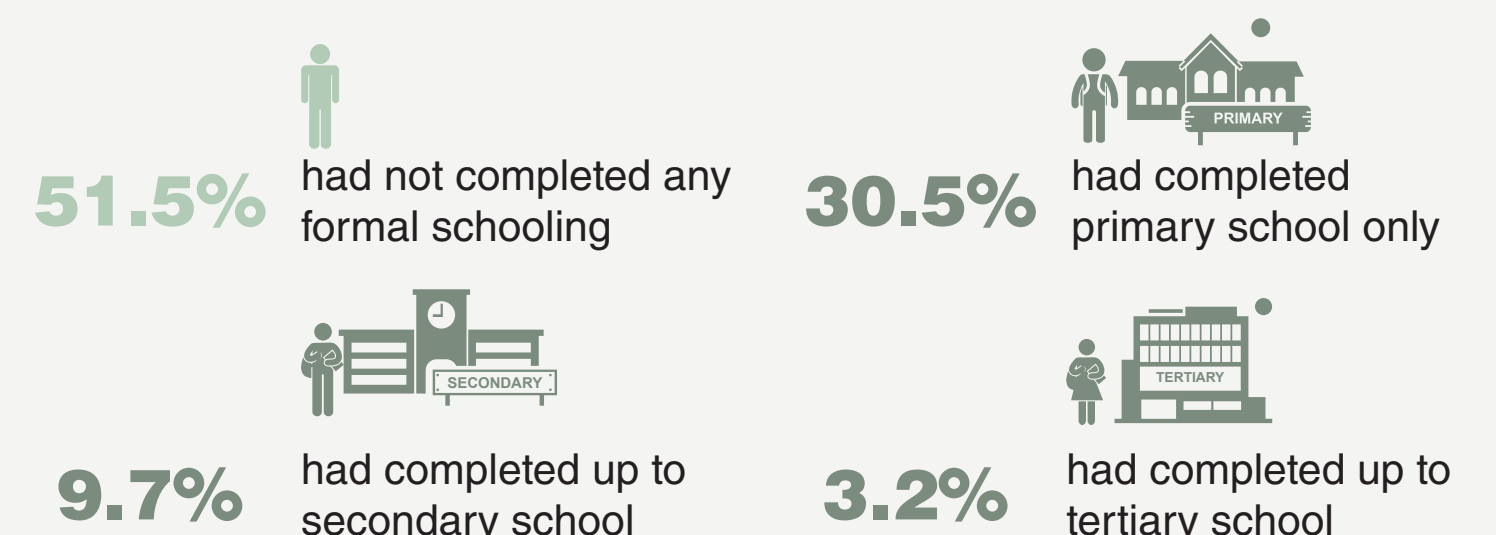
#### Multidimensional poverty distribution across districts



#### Multidimensionally poor by ethnicity



#### Multidimensionally poor by level of education completed of household head



#### Multidimensional poverty by household size

