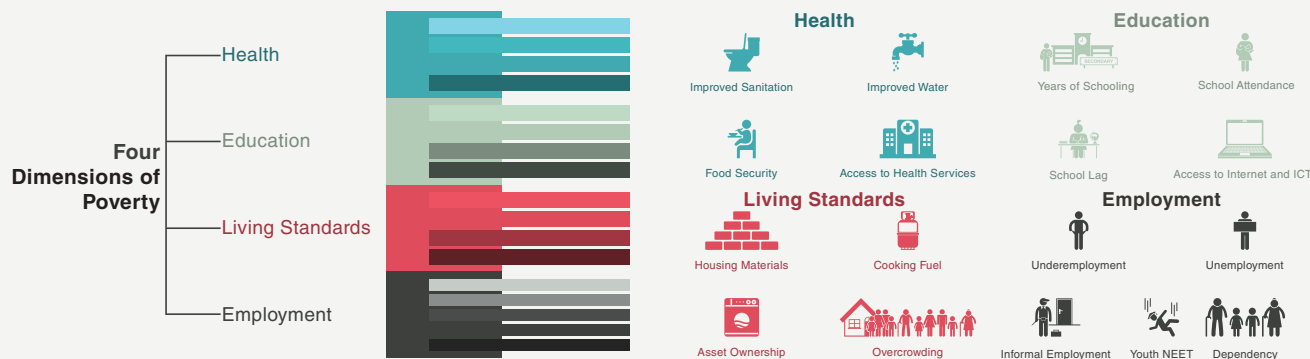


MULTIDIMENSIONAL POVERTY INDEX

BELIZE 2024

BELIZE MULTIDIMENSIONAL POVERTY INDEX

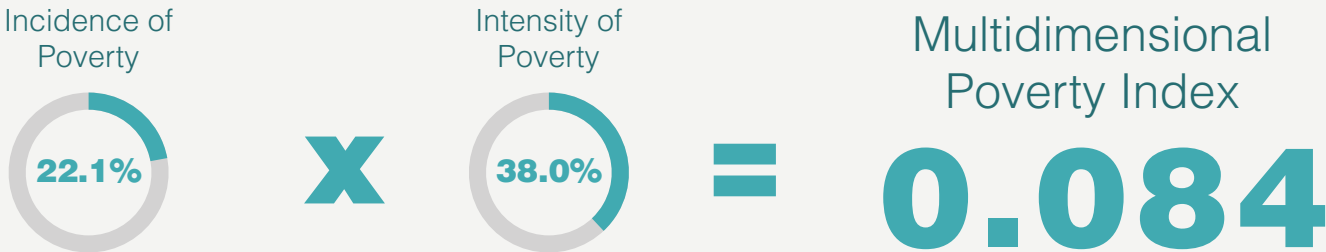
The multidimensional poverty index directly measures different kinds of deprivation that people experience simultaneously across various facets of their life. The multidimensional poverty index considers seventeen different variables across four dimensions.



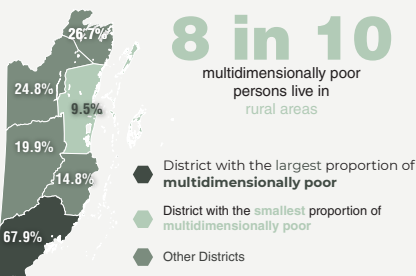
Each household is assessed for each of the 17 indicators and gets a score (deprivation score) depending on the indicators for which it is deprived. The household's total deprivation score is increased by the weight assigned to that indicator. After the household has been assessed for all 17 indicators, the deprivation score for that household will be a number between zero and one. All households with deprivation scores of 0.25 or higher are considered to be multidimensionally poor households.

Official Multidimensional Poverty Estimates, September 2024

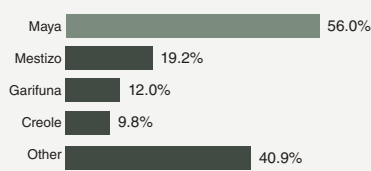
The official Multidimensional Poverty Index in September 2024 was 0.084, with 22.1 percent of the population being multidimensionally poor and an intensity rate of 38.0 percent. It was estimated that 89,874 persons spread across 20,562 households, were multidimensionally poor.



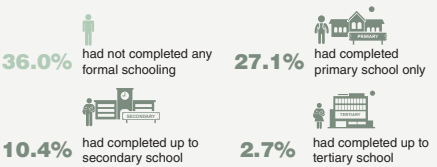
Multidimensional poverty by district



Multidimensional poverty by ethnicity



Multidimensional poverty by educational attainment of household head



Multidimensional poverty by household size

