



STATISTICAL INSTITUTE OF BELIZE



Labour Force Survey
April 2024



PRESENTATION OUTLINE

- 1 Introduction and background of the Labour Force Survey
- 2 Labour force status
- 3 Unemployed labour force
- 4 Employed labour force
- 5 Underemployed labour force
- 6 Informally employed labour force
- 7 Persons outside of the labour force

Introduction & Background Information



The LFS collects information on the size and structure of the employed and unemployed population.



3

The LFS is usually carried out bi-annually with intentions to capture high (in April) and low (in September) peaks of employment.



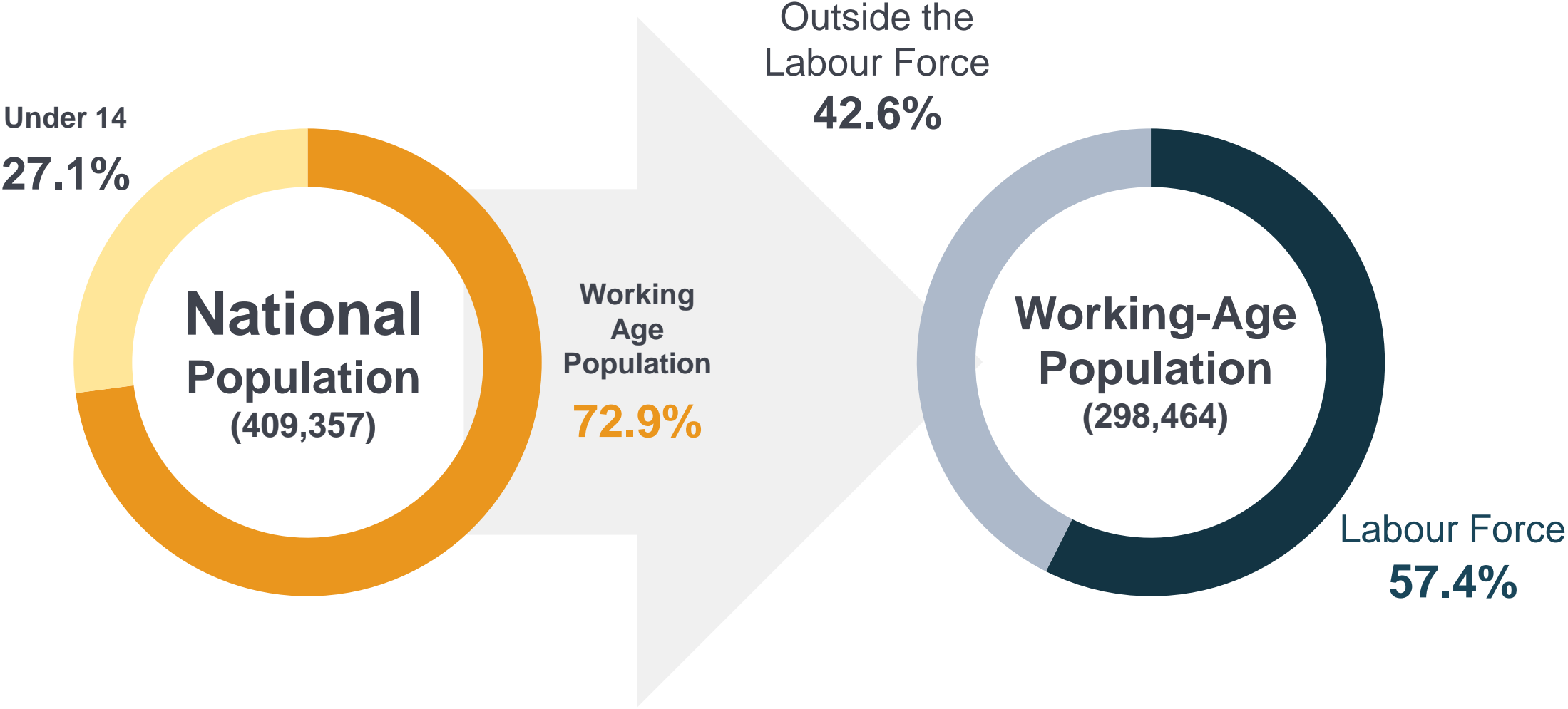
3,000 households from across the country were randomly selected



Refinements to the definitions of the employed, unemployed and underemployed were adopted in September 2020 as per international standards

Percent distribution of the working-age population

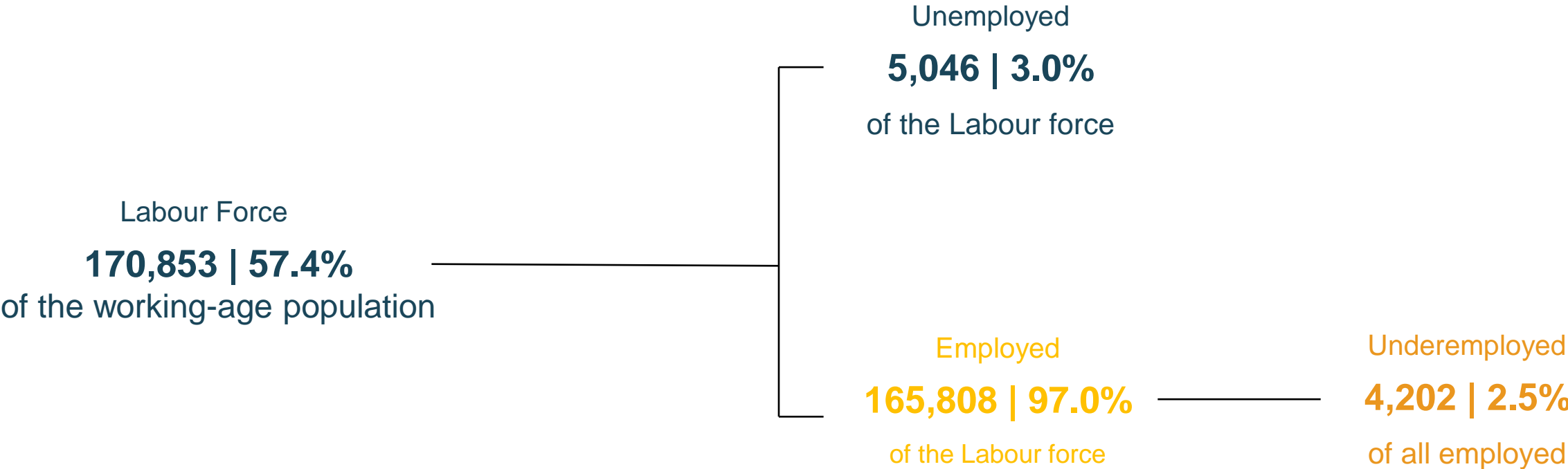
April 2024



Source: Statistical Institute of Belize. Labour Force Survey, April 2024

Percent distribution of the Labour force

April 2024



Source: Statistical Institute of Belize. Labour Force Survey, April 2024

Labour Force

170,853
(-2,682 persons)

Labour Force

April 2024



101,544
Males



69,309
Females



Urban

78,763



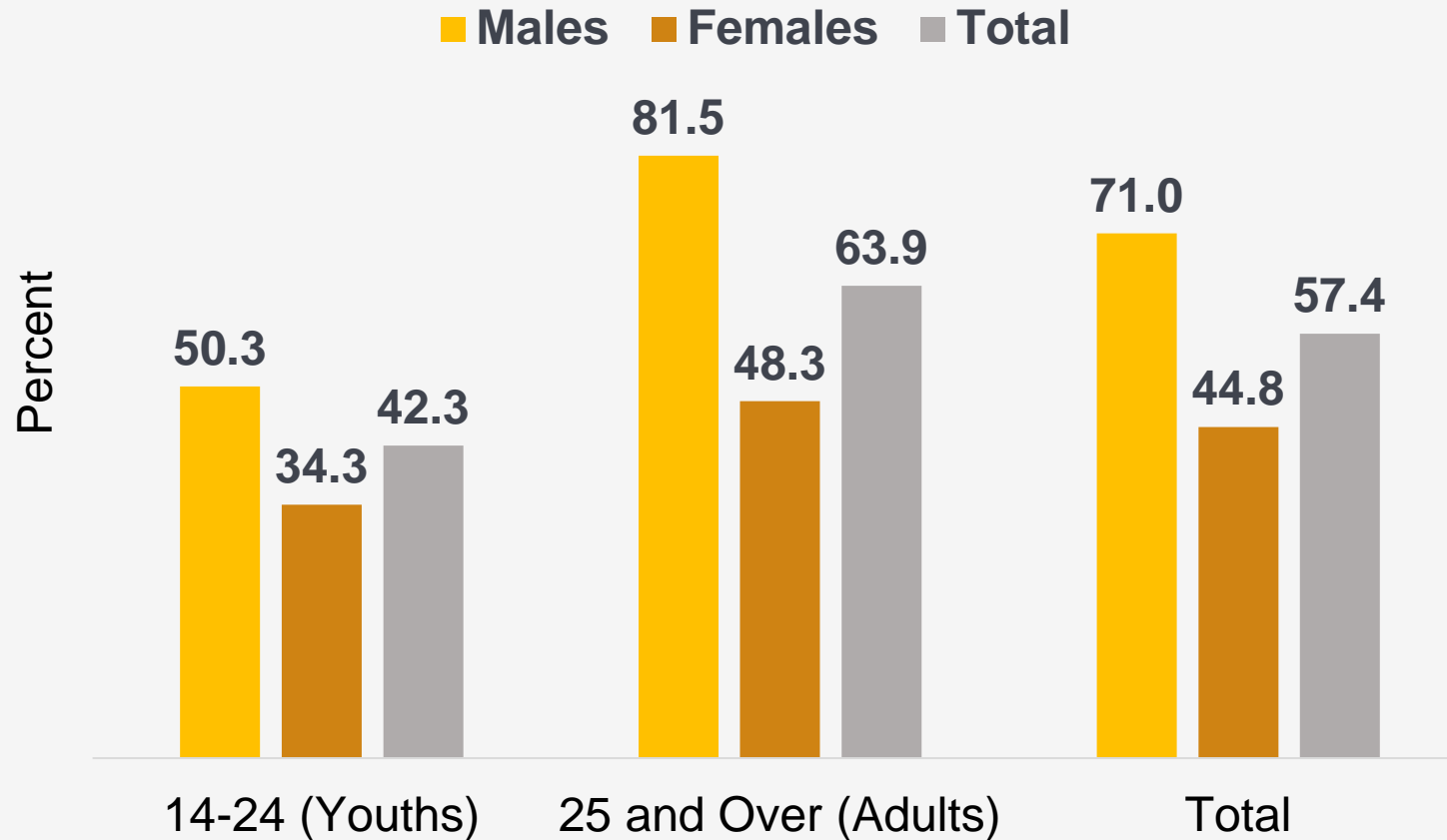
Rural

92,090

Source: Statistical Institute of Belize. Labour Force Survey, April 2024.

Labour force participation rate by sex and age group

April 2024



42.3% of youths participated in the labour force.

Young females 14-24 had the lowest participation rate at **34.3%**.

Adult males 25+ had the highest participation rate at **81.5%**.

UNEMPLOYED

Unemployed persons

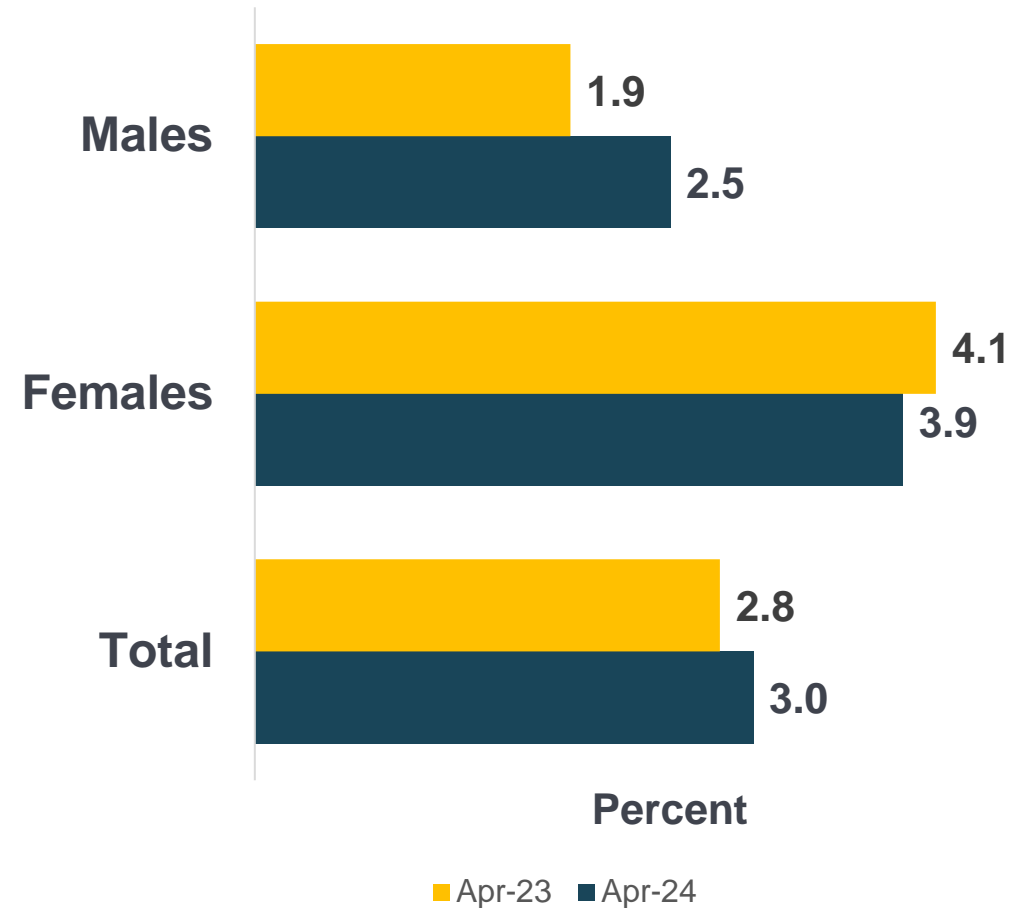
- ✓ **Without** work
- ✓ Carried out activities to **look** for work **within the last 4 weeks**
- ✓ **Available to work** if a job opportunity becomes available **within the next two weeks**.

Unemployment

3.0%
(+0.2%)

Unemployment rates by sex

April 2023 and April 2024



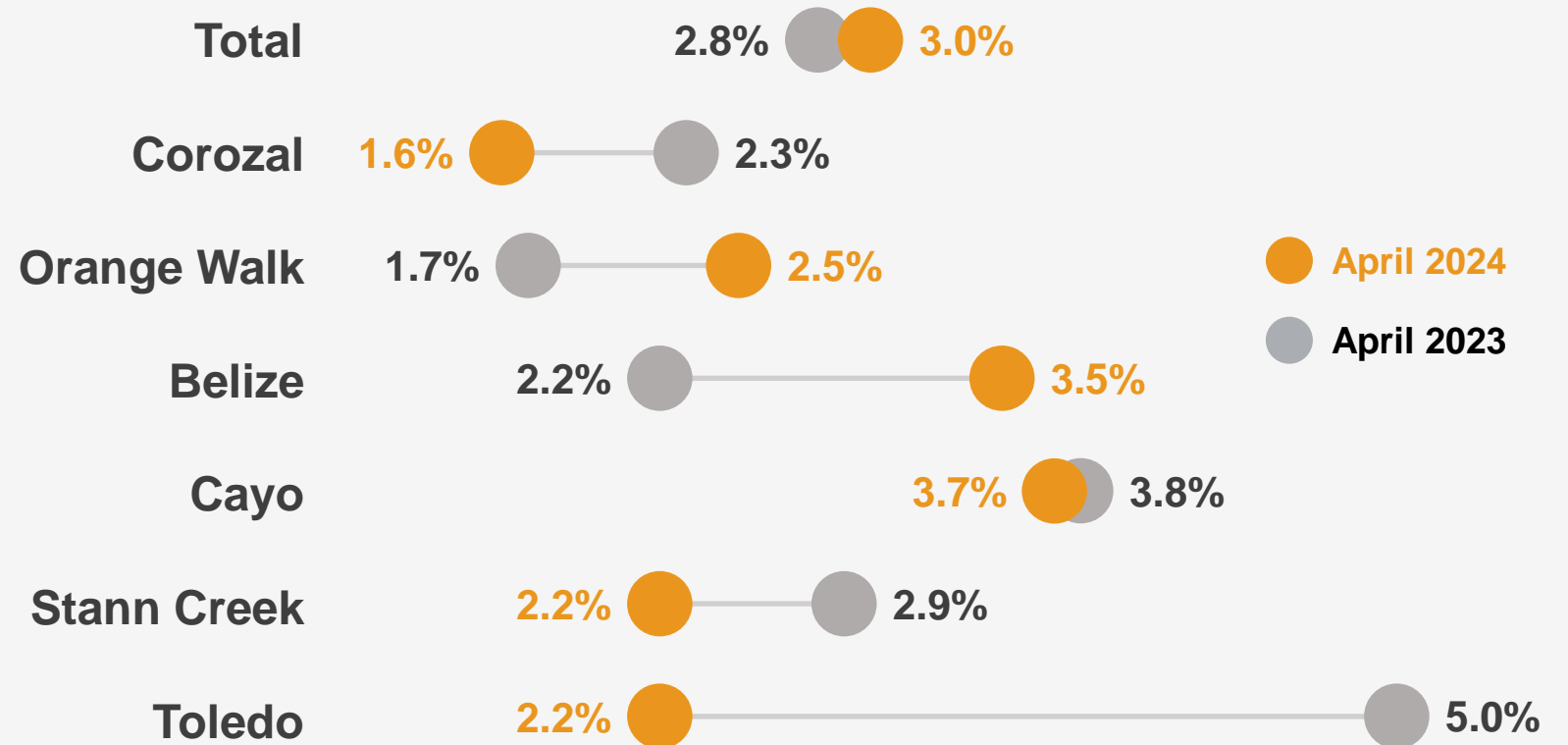
Source: Statistical Institute of Belize. Labour Force Survey, April 2024.

5,046

Unemployed persons
(+241 persons)

Unemployment rates by district April 2024

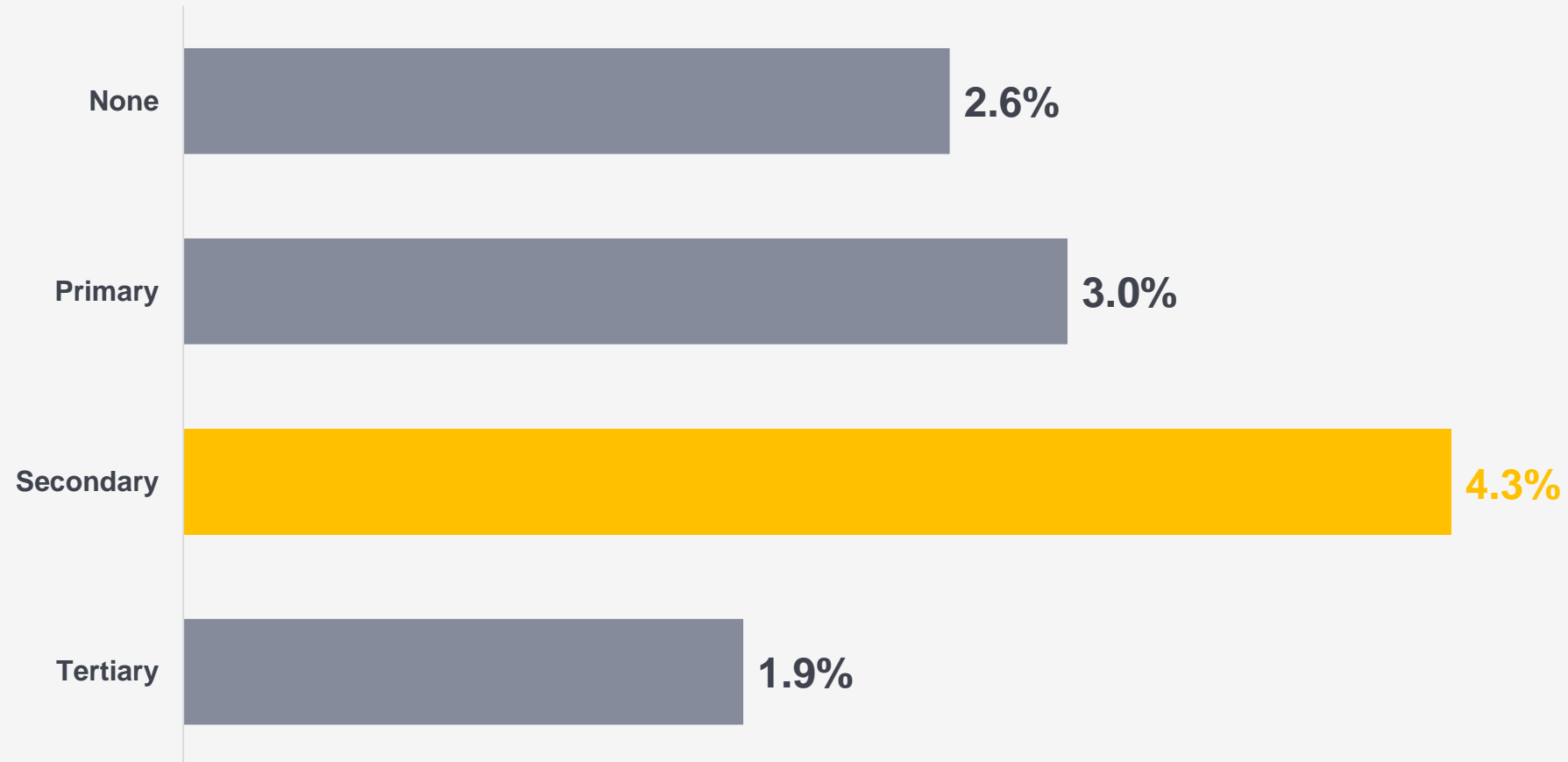
10



Source: Statistical Institute of Belize. Labour Force Survey, April 2024..

Unemployment rates by highest level of education completed

April 2024



Source: Statistical Institute of Belize. Labour Force Survey, April 2024.

Unemployed persons by main source of financial support

April 2024

Source	Percent
Parent/ spouse/ child	72.9
Self	17.5
Other	9.6

Source: Statistical Institute of Belize. Labour Force Survey, April 2024.

EMPLOYED

Employed persons include

- ✓ All who work for **pay or profit**.
- ✓ All who produce goods **mostly** or **only for sale**.
Production mainly or exclusively for home use is excluded.
- ✓ All paid trainees/interns.

Employed persons

165,808

(-2,922 persons)

Employed persons

April 2024



99,117
Males
(59.8%)



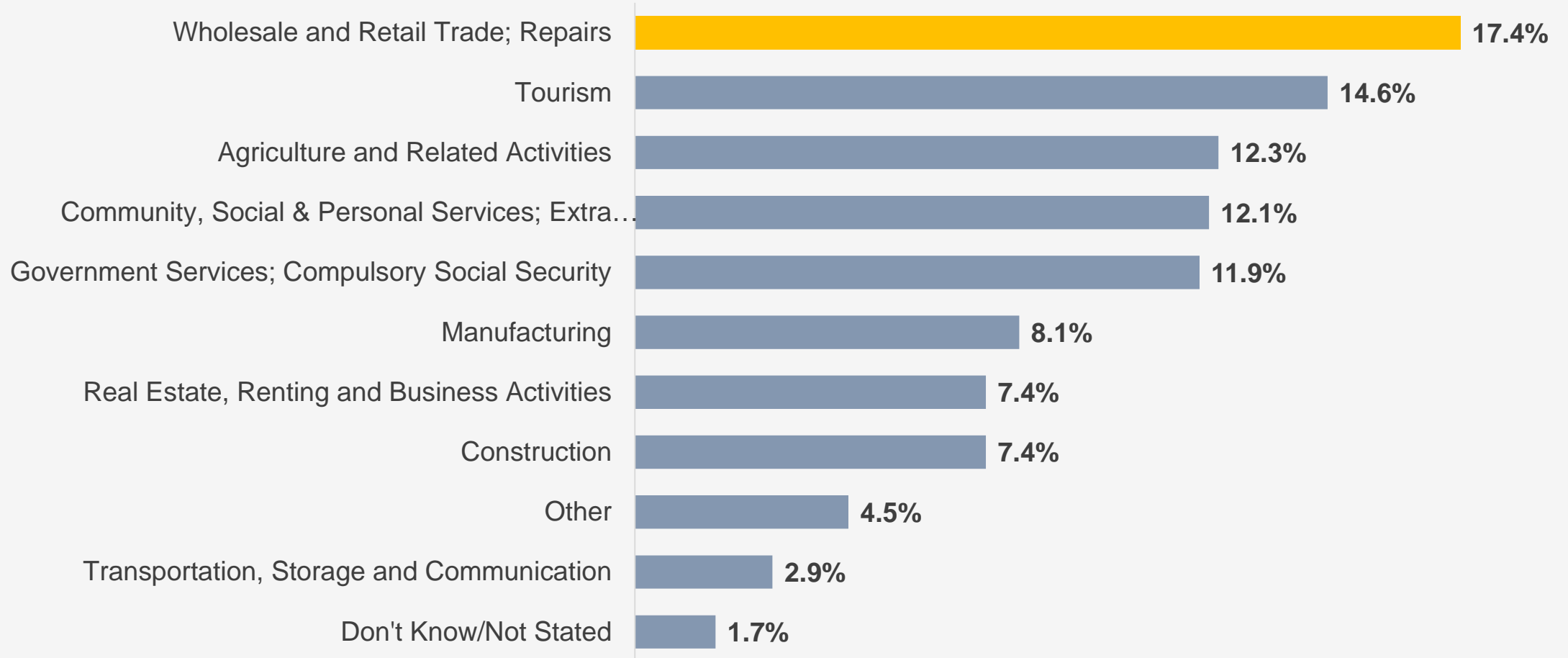
66,691
Females
(40.2%)

- ✓ More than **half** of all **employed persons** were ages **25 to 44 years**.
- ✓ **37.5%** had completed **primary-level** education.
- ✓ **21.7%** completed **tertiary-level** education.
- ✓ **71.5%** were employed as **'Employees'**.
- ✓ **25.3%** were **'Self-employed'** and **2.9%** were **'Contributing family workers'**.

Source: Statistical Institute of Belize. Labour Force Survey, April 2024.

Distribution of employed labour force by major industry

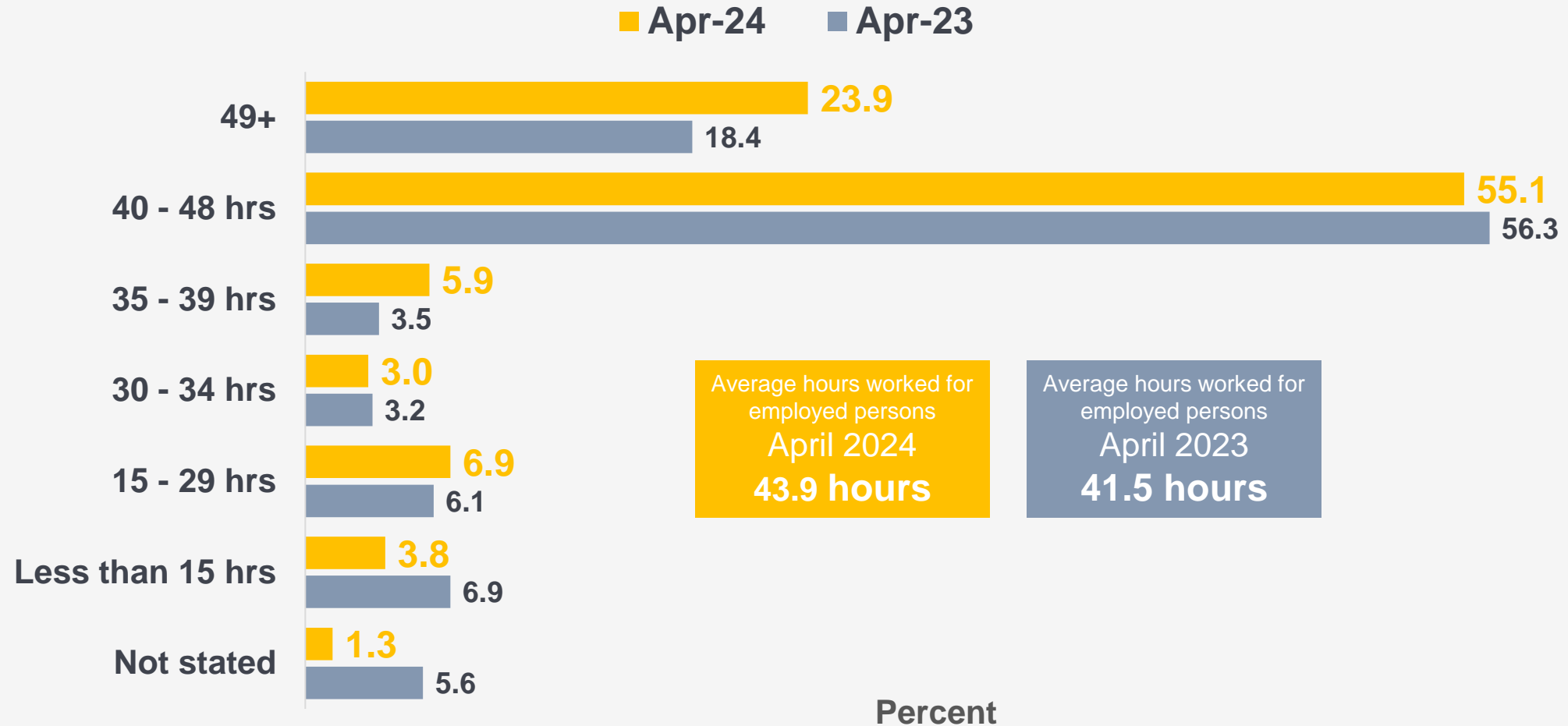
April 2024



Source: Statistical Institute of Belize. Labour Force Survey, April 2024.

Distribution of employed population by usual hours worked per week

April 2023 and April 2024



Source: Statistical Institute of Belize. Labour Force Survey, April 2024.

Employed Labour Force – Average monthly income
April 2023 and April 2024

Type of employment	April 2024	April 2023
Formal employment	\$1,543	\$1,491
Informal employment	\$1,184	\$1,090
Underemployment	\$904	\$754
All employed	\$1,427	\$1,351

Source: Statistical Institute of Belize. Labour Force Survey, April 2024.

INFORMAL EMPLOYMENT

Persons in informal employment

- ✓ SIB identified this group using characteristics of the job held
 - ✓ Self-employment: **not registered** in the Belize Companies and Corporate Affairs Registry or Belize Social Security Board.
 - ✓ Paid employment at private entities: **not contributing** payments to Social Security.



Informal Employment

1

About **56,259** persons, or **33.9%** of all employed persons

2

21.6% were in 'Agriculture and Related Activities' and **19.6%** in 'Wholesale and retail trade; Repairs'.

3

33.6% were 'Employees'; **57.8%** were self-employed.

UNDEREMPLOYED

Underemployed persons

- ✓ Persons working **less than 35 hours** in the reference week
- ✓ **Wanting to work** additional hours
- ✓ **Available** to start working additional hours within the next 2 weeks.

Underemployed persons

4,202
(-6,723 persons)

Underemployed persons

April 2024

2.5% of employed persons in April 2024. Males – 2.1%, Females – 3.2%

42.6% of underemployed persons worked as ‘**Services and Sales workers**’ while **30.3%** of underemployed persons worked in ‘**Elementary Positions**’.

Underemployed

19.3 hours

Per week on average

**Average income for
underemployed**

\$904 Monthly

PERSONS OUTSIDE OF THE LABOUR FORCE

Persons outside the labour force

- ✓ Persons that are **not employed** and **not looking or available** for work fall outside of the labour force.

Persons Outside the Labour Force

Persons not in the labour force



1

Females represented more than 60% of persons outside of the labour force.

2

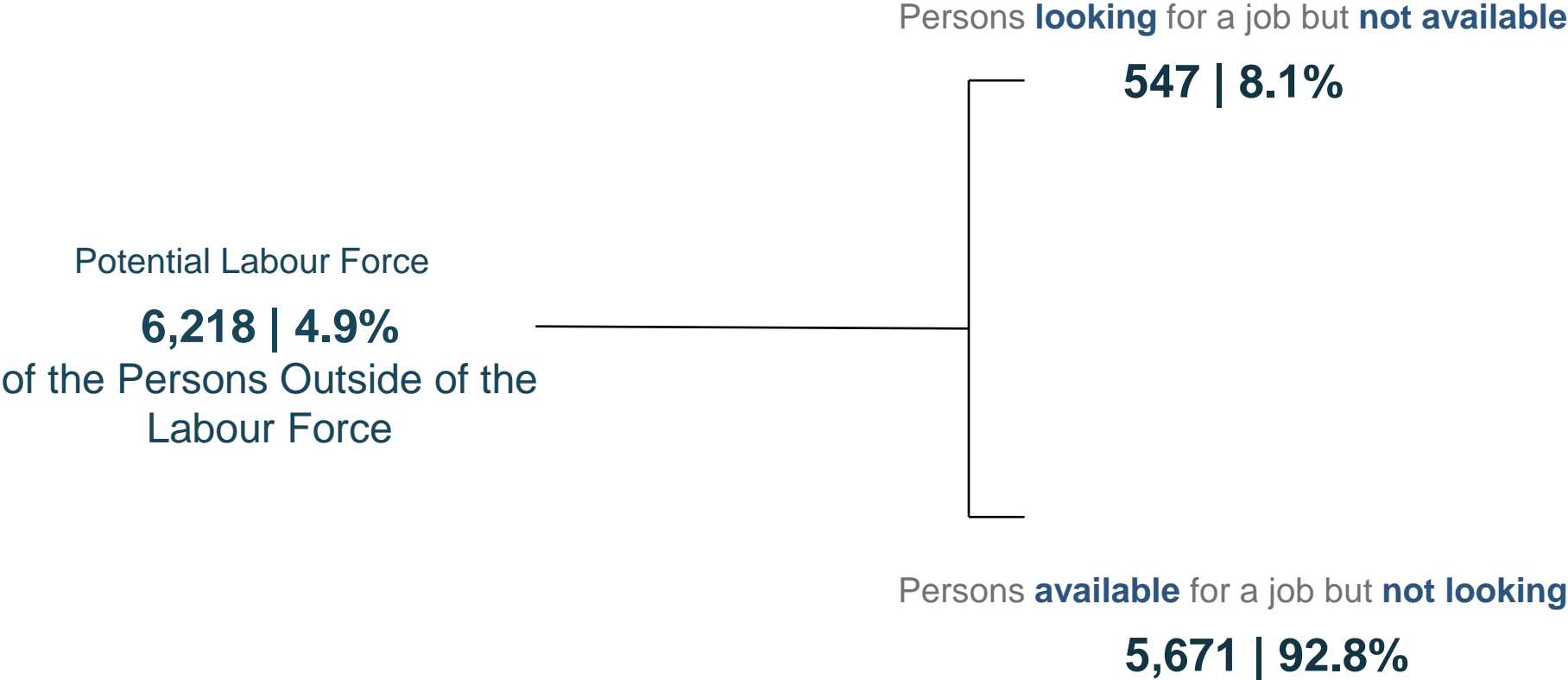
38.8% of persons not in the labour force were not seeking employment due to personal or family responsibilities.

3

25.1% of persons not in the labour force were not seeking employment because they were in school or training.

Percent distribution of the Potential Labour Force

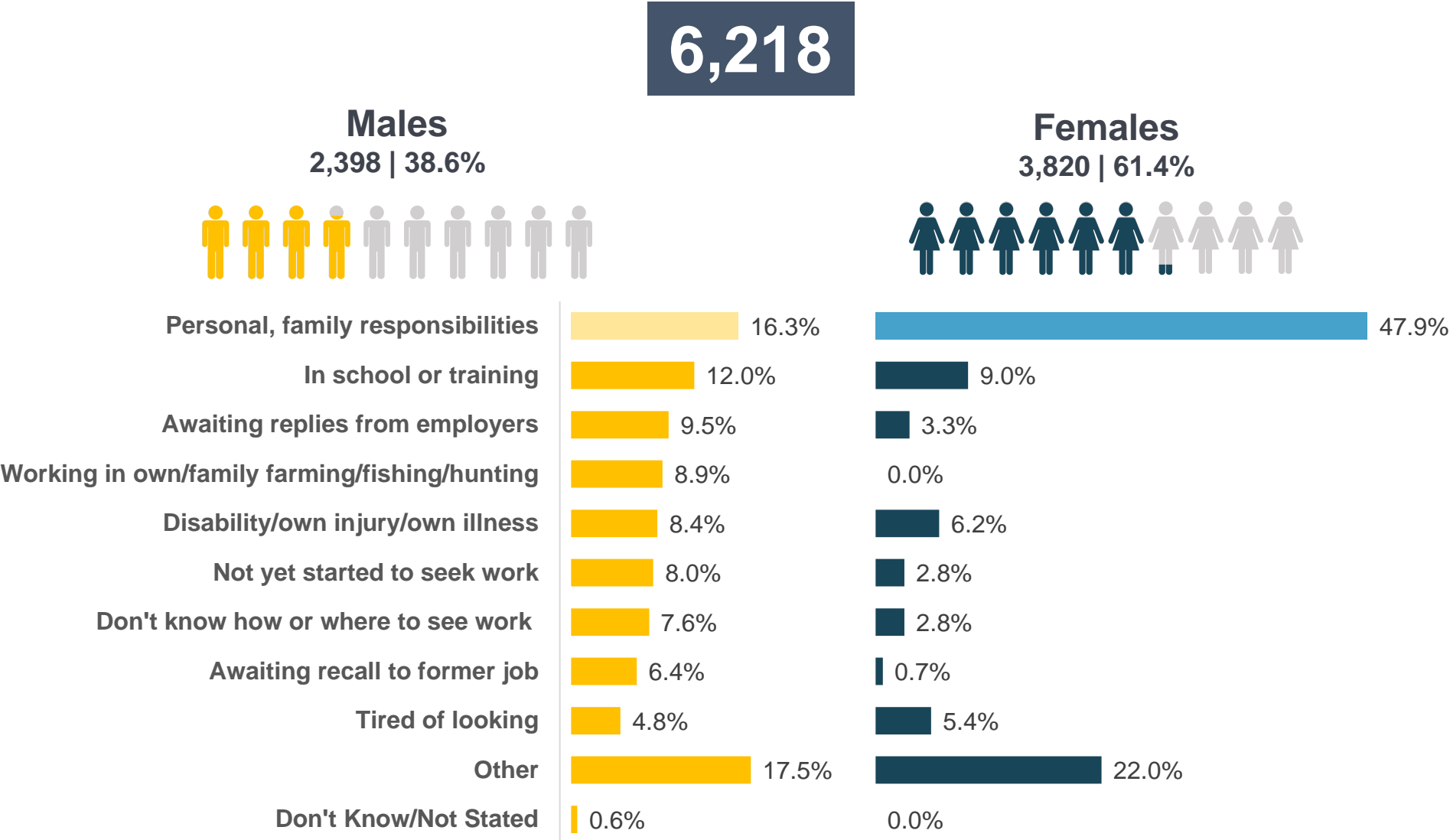
April 2024



Source: Statistical Institute of Belize. Labour Force Survey, April 2024

Potential Labour Force

April 2024



Key Labour Force Indicators

April 2023 and April 2024

Main Indicator	April 2024	April 2023
Employed	165,808	168,730
Unemployed	5,046	4,805
Underemployed	4,202	10,925
Informal employment	56,259	63,672
Unemployment rate	3.0%	2.8%
Labour Force Participation rate	57.4%	58.1%
Average monthly income	\$1,427	\$1,351
Average hours usually worked	43.9	41.5

Source: Statistical Institute of Belize. Labour Force Survey, April 2024.

Summary

The unemployment rate in April 2024 was **3.0%**

The number of employed persons was estimated at **165,808** persons

The four largest employers were

‘Wholesale and Retail Trade; Repairs’

‘Tourism’

‘Agriculture and Related Activities’

‘Community, Social & Personal Services; Extraterritorial Organisations & Bodies’

Labour force participation rate was **57.4%**

The underemployment rate was **2.5%**

The average monthly income was **\$1,427**

Informal employment as a share of all employed persons was **33.9%**

Follow us on social media



<http://www.facebook.com/belizestatistics/>
<https://www.flickr.com/photos/belizestatistics/>
<https://www.instagram.com/belizestatistics/>
<https://www.youtube.com/channel/UCBHNJCdb0DY1GtPHh2KtvYA>

Sign up to receive emails of our releases

<http://www.sib.org.bz/contact-us>

For more information, visit our website

<http://www.sib.org.bz>