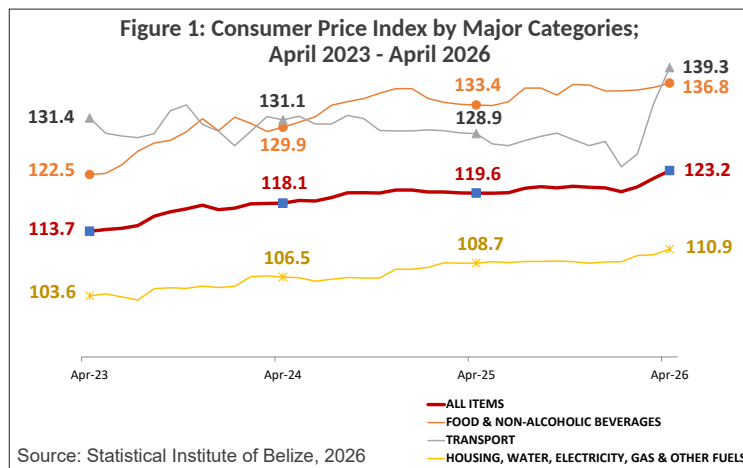


CONSUMER PRICES UP 2.9% IN APRIL 2026: COST OF FUEL, FOOD AND ELECTRICITY UP

Overall National Inflation Rate¹ (All-Items):

Data from the Statistical Institute of Belize’s monthly Consumer Price Index (CPI) survey indicated that, for the month of April 2026, the All-Items CPI, which measures overall price levels across all categories of consumer goods and services, stood at 123.2. This marked an increase from 119.6 in April 2025, reflecting a national inflation rate of 2.9 percent for the month (see Figure 1).

The main drivers of inflation for the month were the ‘Transport’, ‘Food and Non-Alcoholic Beverages’ and ‘Housing, Water, Electricity, Gas and Other Fuels’ categories. Collectively, these accounted for more than three-fourths of the overall rise in consumer prices for April 2026, when compared to April 2025.



Transport:

‘Transport’ costs were up by a considerable 8.0 percent on average, reflecting increases in the prices of all types of motor vehicle fuels during the month (see Figure 3). Diesel recorded the largest increase, with average prices rising by \$3.02 per gallon from \$11.66 in April 2025 to \$14.68 in April 2026. Regular gasoline increased by \$1.89, from \$12.03 to \$13.92, while premium gasoline was up by \$1.46, from \$13.24 in April of last year to \$14.71 in April of this year (see Table 1).

Food and Non-Alcoholic Beverages:

Prices within the ‘Food and Non-Alcoholic Beverages’ category increased by 2.6 percent (see Figure 3) for the month. This was primarily driven by a 2.6 percent rise in the ‘Food’ sub-category, with notable price increases recorded for meats such as pork, beef, and poultry (3.9 percent); sugar (16.1 percent); and fresh fruits such as limes and avocados (9.7 percent).

The ‘Non-Alcoholic Beverages’ sub-category also saw prices increase by 2.5 percent, reflecting higher costs for instant coffee (11.5 percent), fruit and vegetable juices (3.0 percent), purified water (1.2 percent), and soft drinks (1.0 percent).

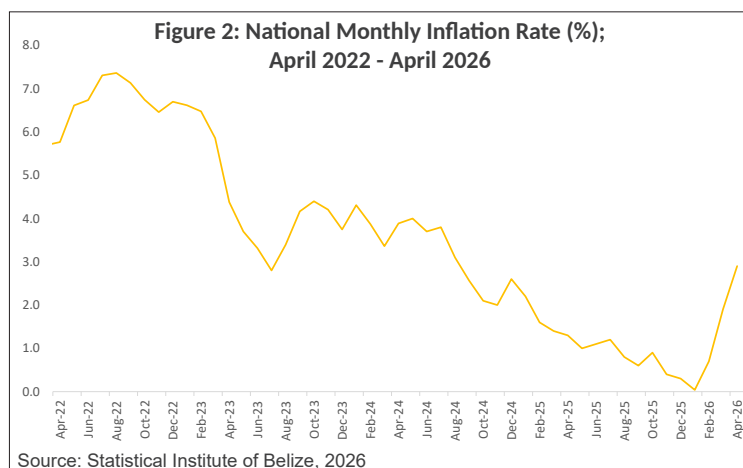


Table 1: Average Prices of Selected Foods and Fuel (BZ \$); April 2025 and April 2026

| Item | Unit of Measurement | Average Prices | | % |
|-------------------------------|---------------------|----------------|-----------|--------|
| | | APR. 2025 | APR. 2026 | |
| Flour Tortilla | Pack of 5 | \$2.22 | \$2.26 | 1.9% |
| Hotdog Bread | Pack of 8 | \$2.98 | \$3.02 | 1.4% |
| Ground Beef | 1 Lb | \$7.60 | \$8.10 | 6.7% |
| Beef Steak | 1 Lb | \$9.94 | \$10.86 | 9.3% |
| Stew Pork | 1 Lb | \$7.22 | \$8.22 | 13.9% |
| Whole Chicken | 1 Lb | \$3.23 | \$3.32 | 2.8% |
| Chicken Cuts | 1 Lb | \$3.72 | \$3.75 | 0.9% |
| Chicken, Legs | 1 Lb | \$3.56 | \$3.76 | 5.8% |
| Chicken, Wings | 1 Lb | \$6.81 | \$7.11 | 4.4% |
| Chicken, Breast | 1 Lb | \$4.80 | \$4.93 | 2.8% |
| Turkey | 1 Lb | \$5.82 | \$6.32 | 8.7% |
| Whole Fish | 1 Lb | \$9.25 | \$10.12 | 9.4% |
| Natural Milk | 1 Liter | \$4.09 | \$4.29 | 4.8% |
| Pineapples | 1 Lb | \$1.64 | \$1.56 | -5.1% |
| Lime | 1 Unit | \$0.61 | \$0.78 | 29.2% |
| Orange | 1 Unit | \$0.31 | \$0.32 | 4.6% |
| Watermelon | 1 Lb | \$1.02 | \$0.94 | -7.7% |
| Grapefruits | 1 Unit | \$0.63 | \$0.72 | 14.9% |
| Apples | 1 Unit | \$1.26 | \$1.36 | 8.0% |
| Grapes | 1 Lb | \$9.93 | \$10.62 | 7.0% |
| Broccoli or Cauliflower | 1 Lb | \$5.35 | \$5.73 | 7.0% |
| Cucumber | 1 Lb | \$1.23 | \$1.23 | 0.3% |
| Tomatoes | 1 Lb | \$2.23 | \$1.95 | -12.7% |
| Okras | 1 Lb | \$4.12 | \$3.79 | -8.0% |
| Carrots | 1 Lb | \$2.43 | \$2.42 | -0.4% |
| Onion | 1 Lb | \$2.78 | \$2.64 | -5.1% |
| Corn | Pack of 3 | \$7.08 | \$6.75 | -4.6% |
| Irish Potatoes | 1 Lb | \$2.85 | \$2.74 | -3.8% |
| Plantain | 1 Unit | \$0.55 | \$0.52 | -5.9% |
| Black Beans | 1 Lb | \$2.97 | \$2.58 | -13.1% |
| Red Kidney Beans | 1 Lb | \$2.83 | \$2.89 | 2.3% |
| Sugar | 1 Lb | \$1.20 | \$1.43 | 19.3% |
| Dry Soup - Ramen | 64 Grams | \$1.94 | \$1.89 | -2.5% |
| Salt | 500 Grams | \$1.14 | \$1.16 | 1.9% |
| Premium Gasoline | 1 Gallon | \$13.24 | \$14.71 | 11.0% |
| Regular Gasoline | 1 Gallon | \$12.03 | \$13.92 | 15.7% |
| Diesel | 1 Gallon | \$11.66 | \$14.68 | 26.0% |
| Liquefied Petroleum Gas (LPG) | 100 Lbs | \$127.63 | \$136.47 | 6.9% |

Source: Statistical Institute of Belize, 2026

Housing, Water, Electricity, Gas and Other Fuels:

Prices for ‘Housing, Water, Electricity, Gas and Other Fuels’ were up by 2.0 percent on average in April 2026, when compared to April 2025 (see Figure 3). This was largely attributed to the higher electricity tariffs implemented at the start of this year, along with a rise in Liquefied Petroleum Gas (LPG) prices. The average cost of a 100-pound cylinder of LPG increased by \$8.84, from \$127.63 in April 2025 to \$136.50 in April 2026.

Restaurants and Accommodation Services:

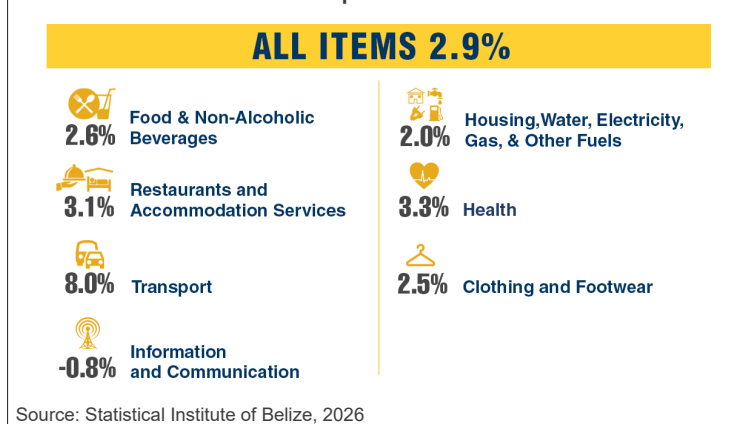
‘Restaurants and Accommodation Services’ had an inflation rate of 3.1 percent for the month of April 2026, due to higher prices for restaurants and café services (see Figure 3).

Clothing and Footwear:

Prices in the ‘Clothing and Footwear’ category were up by 2.5 percent, the result of increases in the cost of garments and footwear for men (see Figure 3).

¹ The national inflation rate for the month measures the percent change in the CPI between April 2025 and April 2026.

**Figure 3: Inflation Rates for Selected Major Categories;
April 2026**



Health:

The 'Health' category rose by 3.3 percent, reflecting higher costs for doctor's office visits, medicinal products, and medical services such as surgical procedures (see Figure 3).

Information and Communication:

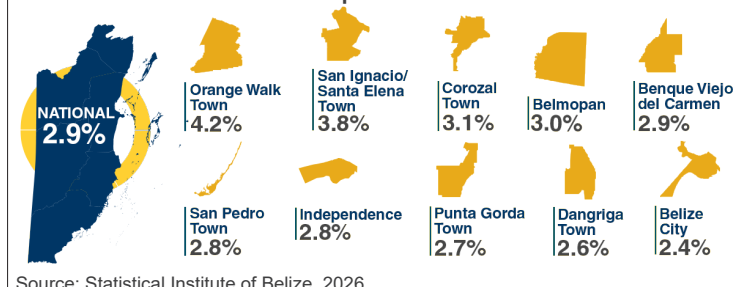
The 'Information and Communication' category was the only one to record a decline during the month, decreasing by a marginal 0.8 percent in April 2026 (see Figure 3), owing to lower prices for mobile telephone equipment such as cellular phones.

Inflation Rates by Municipality:

Among the municipalities, Orange Walk Town recorded the highest increase in consumer prices, with an inflation rate of 4.2 percent for April 2026 (see Figure 4). Consumers in this town experienced above-average price increases across a range of goods and services, including food, non-alcoholic beverages, doctor's office visits, medicinal products, medical services such as surgical procedures, and restaurant and café services.

Belize City, on the other hand, recorded the lowest rate of increase in consumer prices for the month at 2.4 percent (see Figure 4). Consumers within this municipality saw below-average increases in prices for food, non-alcoholic beverages, and recreational activities, including night club entrance fees and fairs.

**Figure 4: Inflation Rates by Municipality (%);
April 2026**



Month-Over-Month Inflation Rates²:

Inflation rates are typically calculated as the percentage change in prices for specific items between the current period and the same period in the previous year. However, another valuable indicator for monitoring short-term price fluctuations is the month-over-month, or inter-monthly, inflation rate, which reflects the percentage change in prices between consecutive months.

For the period between March and April 2026, the month-over-month inflation rate stood at 1.0 percent (see Table 2). 'Transport' costs rose by a considerable 4.2 percent over this one-month period, the result of higher prices across all types of motor vehicle fuel. The largest increase was seen in the average price of diesel fuel, which rose by \$2.42 between March and April. This was followed by premium gasoline, which was up by \$0.88, and regular gasoline, which rose by \$0.82. Additionally, within the 'Housing, Water, Electricity, Gas and Other Fuels' category, the average price of a 100-pound cylinder of LPG went up by 7.4 percent over the one-month period. Food prices also rose by 0.5 percent, mainly due to higher costs for meats and fresh vegetables.

**Table 2: Month-Over-Month Inflation Rates by Category (%);
April 2026**

| Category | Inflation Rate |
|---|----------------|
| ALL ITEMS | 1.0% |
| Food and Non-Alcoholic Beverages | 0.5% |
| Alcoholic Beverages, Tobacco and Narcotics | 0.0% |
| Clothing and Footwear | 0.0% |
| Housing, Water, Electricity, Gas and Other Fuels | 0.8% |
| Furnishings, Household Equipment and Routine Household Maintenance | 0.0% |
| Health | 0.0% |
| Transport | 4.2% |
| Information and Communication | 0.0% |
| Recreation, Sport and Culture | 0.0% |
| Education Services | 0.0% |
| Restaurants and Accommodation Services | 0.0% |
| Insurance and Financial Services | 0.0% |
| Personal Care, Social Protection and Miscellaneous Goods and Services | 0.0% |

Source: Statistical Institute of Belize, 2026

Year-to-Date Inflation Rate³:

The year-to-date inflation rate for the first four months of the year stood at 1.4 percent, reflecting increases across most major CPI categories compared to the same period last year (see Table 3).

The largest contributor was a 1.7 percent increase in 'Food and Non-Alcoholic Beverages', driven by higher prices for meats, sugar, instant coffee, fruit and vegetable juices, purified water, and soft drinks. This was followed by a 1.3 percent rise in 'Housing, Water, Electricity, Gas and Other Fuels', reflecting mainly higher electricity tariffs.

The 'Restaurants and Accommodation Services' category increased by 2.7 percent, as restaurant and café service prices were higher than they were during the first four months of last year, while 'Transport' costs rose by 1.1 percent, due to higher fuel prices. The 'Health' category recorded a year-to-date inflation rate of 3.6 percent, reflecting higher costs for doctor's office visits, medicinal products, and medical services such as surgical procedures. Finally, 'Clothing and Footwear' increased by 2.1 percent due to higher prices for male garments and footwear.

In contrast, the 'Information and Communication' category declined by 0.8 percent, as average prices for cellular phones were lower during the first four months of this year than they were in the first four months of last year (see Table 3).

**Table 3: Year-to-Date Inflation Rates by Category (%);
April 2026**

| Category | Inflation Rate |
|---|----------------|
| ALL ITEMS | 1.4% |
| Food and Non-Alcoholic Beverages | 1.7% |
| Alcoholic Beverages, Tobacco and Narcotics | 1.8% |
| Clothing and Footwear | 2.1% |
| Housing, Water, Electricity, Gas and Other Fuels | 1.3% |
| Furnishings, Household Equipment and Routine Household Maintenance | 0.6% |
| Health | 3.6% |
| Transport | 1.1% |
| Information and Communication | -0.8% |
| Recreation, Sport and Culture | 0.5% |
| Education Services | 0.8% |
| Restaurants and Accommodation Services | 2.7% |
| Insurance and Financial Services | 0.0% |
| Personal Care, Social Protection and Miscellaneous Goods and Services | 0.5% |

Source: Statistical Institute of Belize, 2026

² The month-over-month inflation rate measures the percent change in prices between the previous month and the current month. It is useful for capturing short-term price changes but is also affected by seasonal price movements.

³ The year-to-date inflation rate as of April 2026 measures the percent change in the average CPI for the first four months of 2026 compared to the average CPI for the first four months of 2025.