

CORONAVIRUS (COVID-19) & THE BELIZEAN LABOR MARKET

The economic impact of COVID-19 on a country's citizens depends greatly on the labor market conditions that were present just before the start of the crisis. The information below pertains to September 2019 and represents Belize's employment and unemployment situation as it was going into the COVID-19 pandemic.

271,651

Working Age Population

190,307

Labor Force



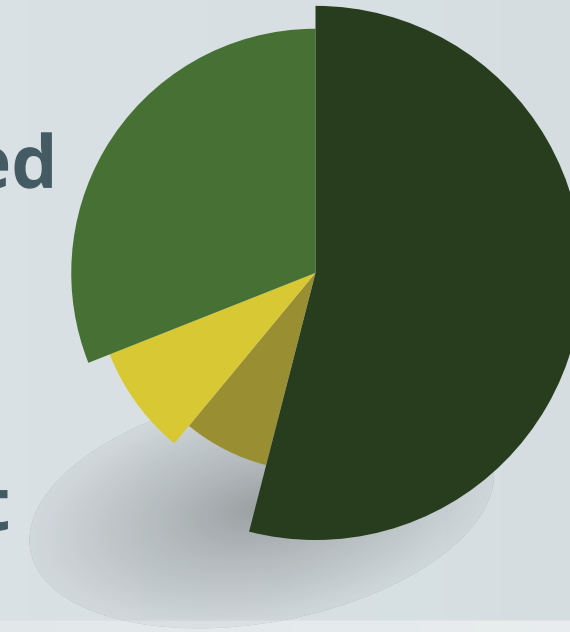
Employed Persons by Type of Employer

31%
Self - Employed

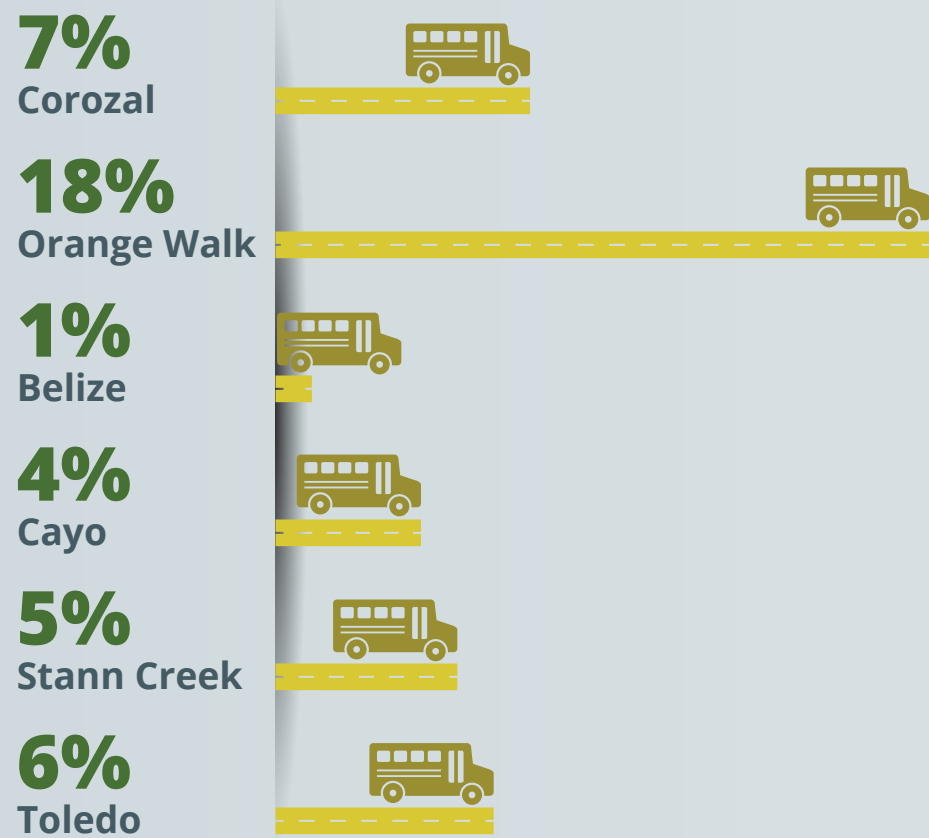
8%
Government

54%
Private

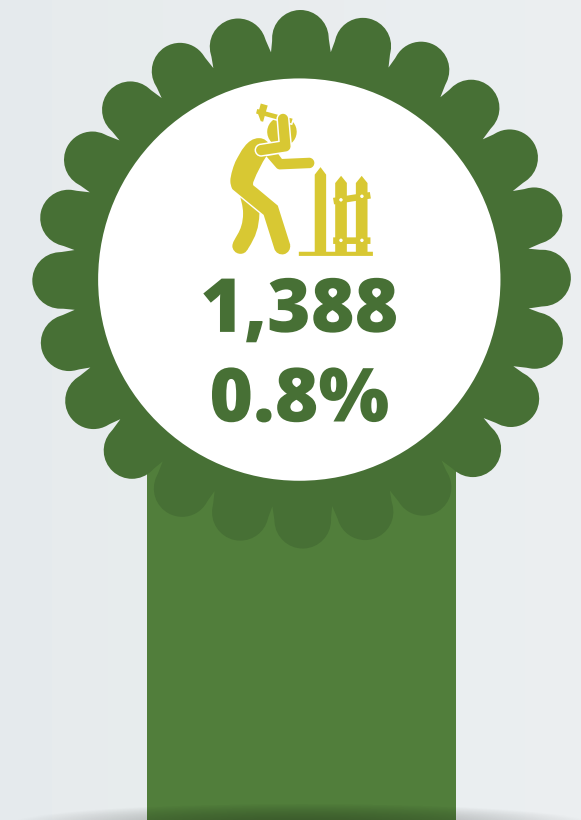
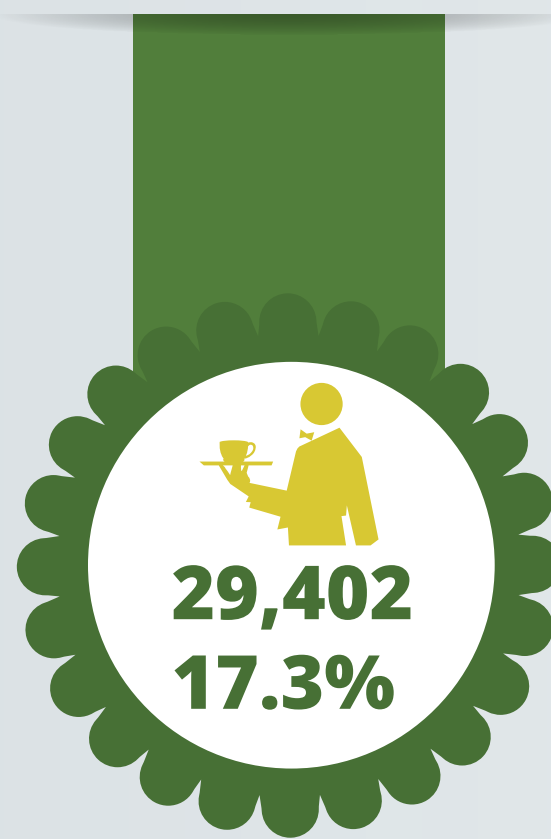
7%
Unpaid Family Worker



Percent of Employed Persons that Commuted Out-District for Work



Persons Employed in the Tourism Sector



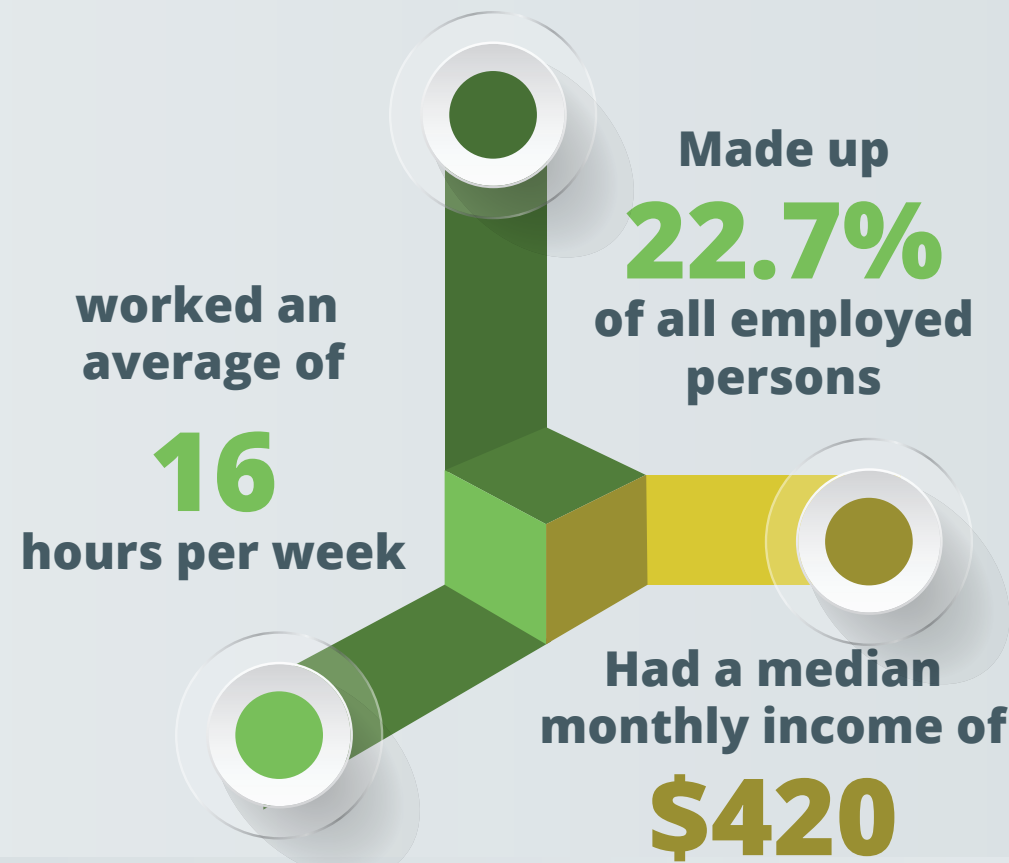
Persons whose Main Job is doing Odd Jobs

Median Monthly Income

\$1,020



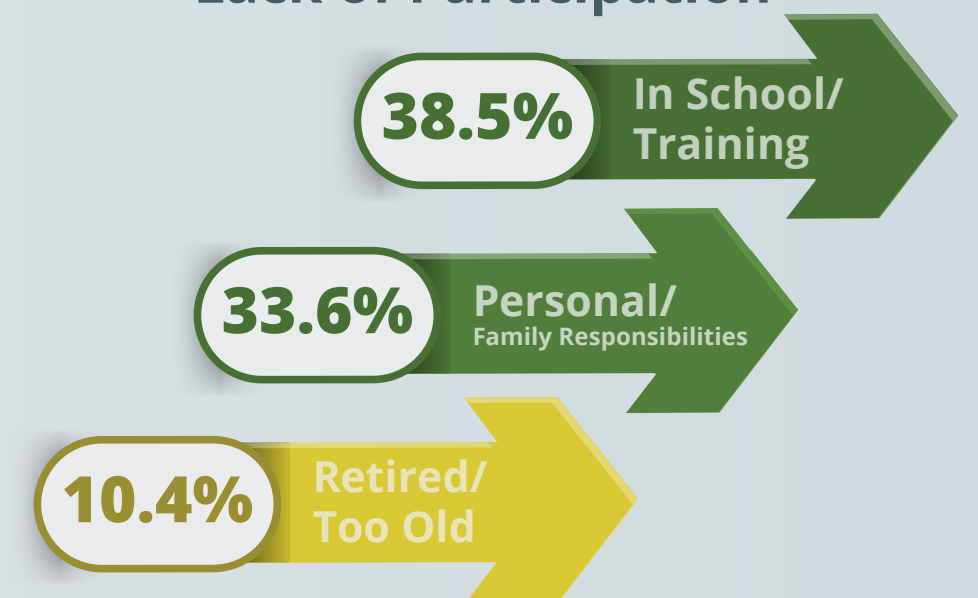
Underemployed Persons (Work less than 35 hours per week)



Persons Not in the Labor Force (didn't have jobs and were not available for work)

81,344

Main Reasons for Lack of Participation



Unemployment Rate

10.4%

Male



6.6%

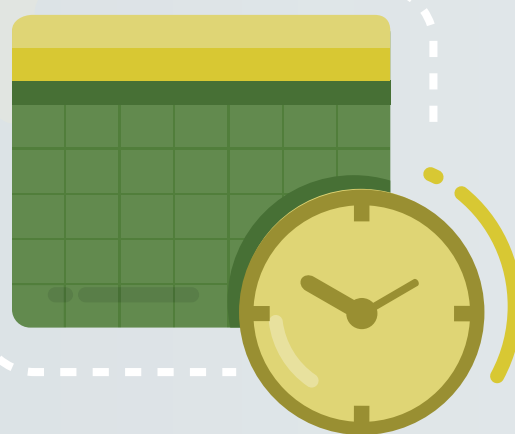
Female



15.7%

Average length of time unemployed persons remain without a job.

1 Year 2 Months



Source of Financial Support for Unemployed Persons

