

BUSINESS ESTABLISHMENTS IN BELIZE

The Business Establishment Survey was conducted in 2016. It provides information on the composition, structure and economic performance of large and small business activities in the country of Belize.

As of 2016:

7,975

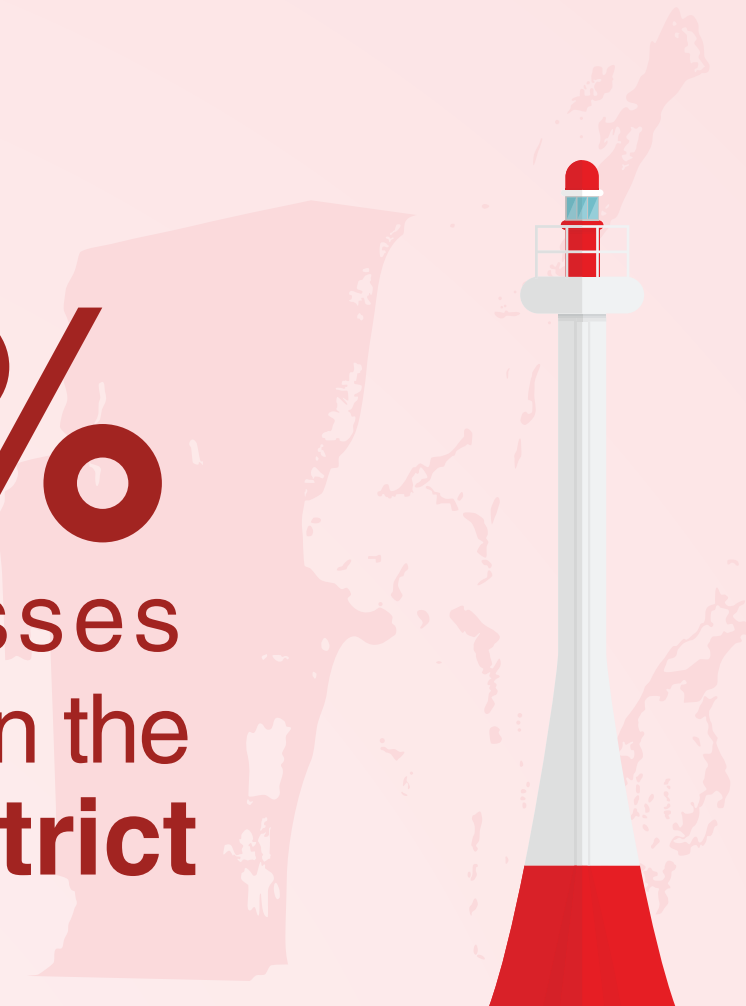
Active Business Establishments



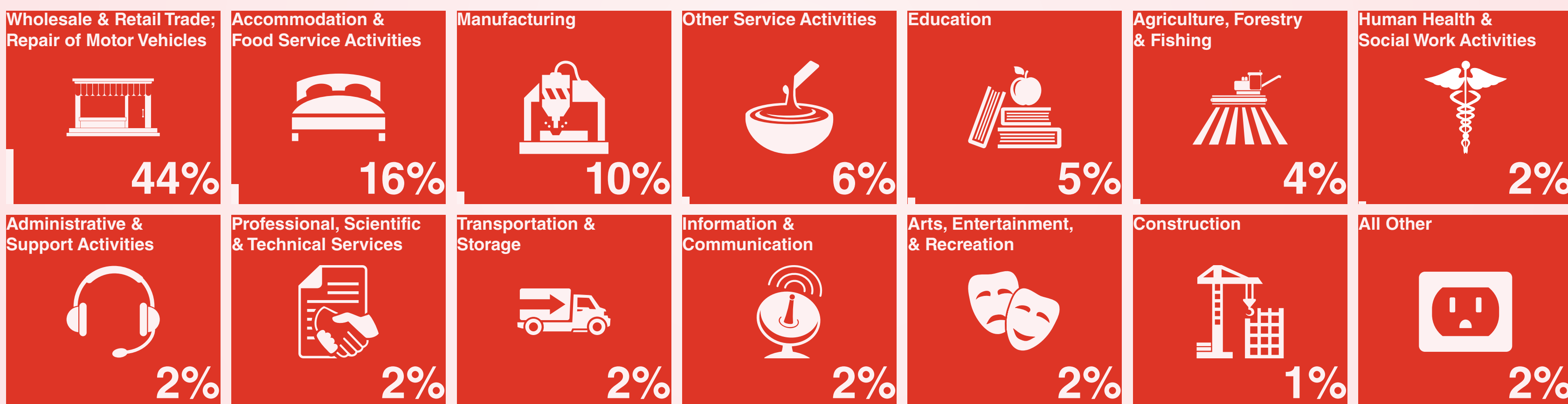
77%
of businesses are
Sole-Proprietorships

18%
of businesses are
Companies

31%
of businesses
are located in the
Belize District

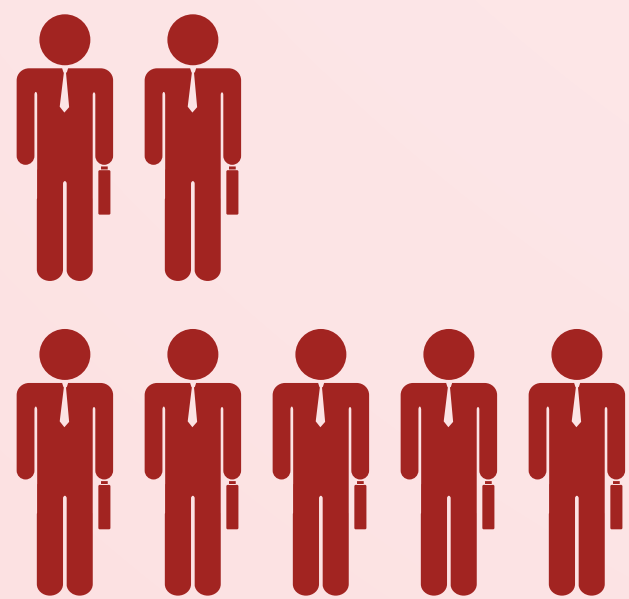


DISTRIBUTION OF BUSINESS ESTABLISHMENTS BY INDUSTRY, 2016



COST STRUCTURE OF ALL BUSINESS ESTABLISHMENTS, 2016

Half of all businesses employ
between **2** to **5** persons



Learn more about the Business Establishment survey at www.sib.org.bz/other-statistics